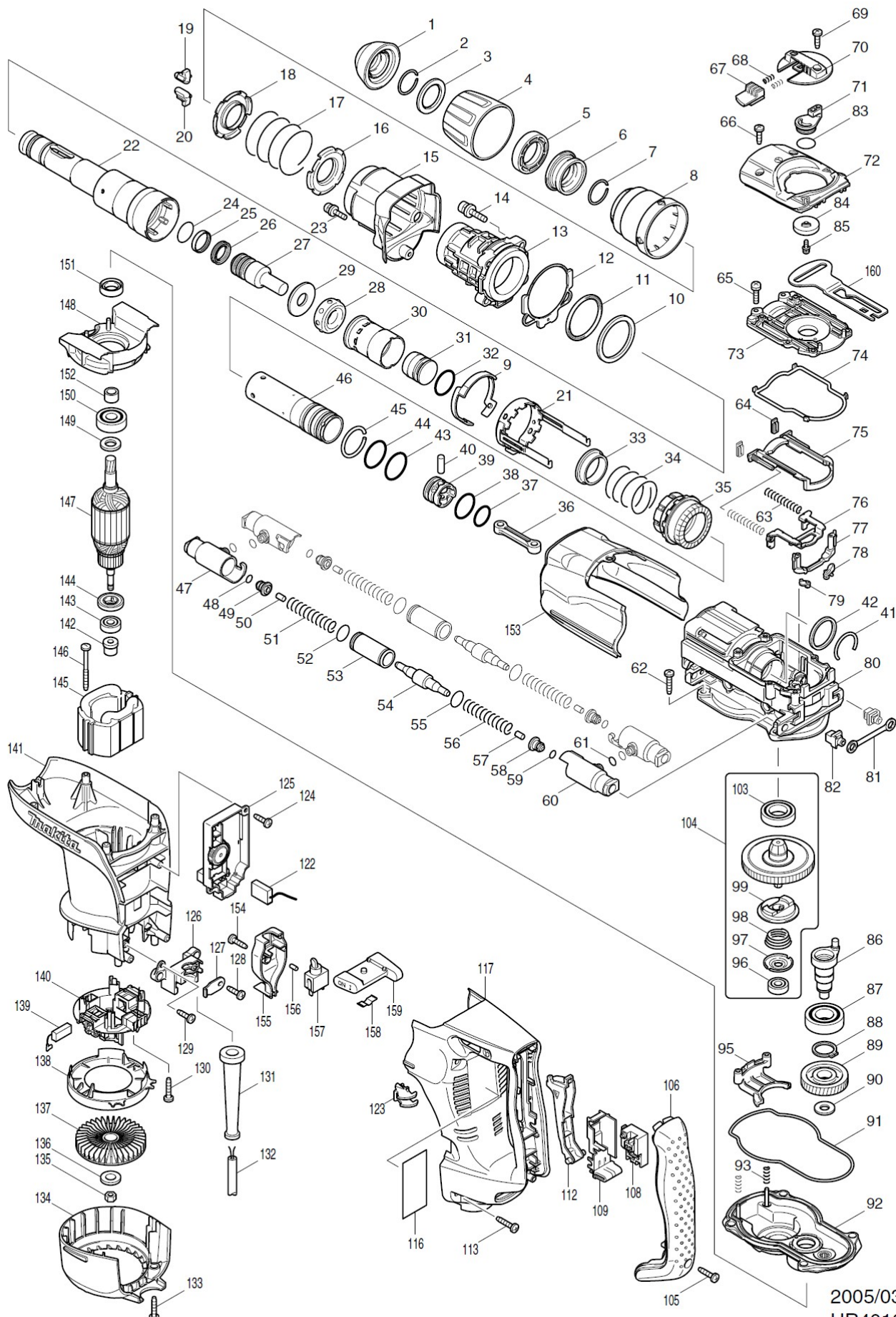


Perfo-Burineur SDS-Max HR4010C



2005/03
HR4010C

Perfo-Burineur SDS-Max HR4010C



Item	Parts_No.	Parts_Description	Qty
1	286272-3	TOOL HOLDER CAP	1
001-1	286285-4	TOOL HOLDER CAP	1
2	231984-3	RING SPRING 25	1
3	267272-2	FLAT WASHER 28	1
4	419015-0	CHUCK COVER	1
5	419002-9	SPACER	1
6	324548-1	CHUCK RING	1
7	231984-3	RING SPRING 25	1
8	419016-8	RELEASE COVER	1
9	419017-6	LOCK SLEEVE GUIDE	1
009-1	419760-7	LOCK SLEEVE GUIDE	1
10	267298-4	FLAT WASHER 45	1
010-1	267336-2	FLAT WASHER 45	1
11	262116-1	URETHAN RING 45	1
12	421911-0	SEAL SHEET	1
13	154621-1	BARREL COMPLETE	1
14	922353-6	HEX.SOCKET HEAD BOLT M6X30	4
15	154624-5	BARREL COVER COMPLETE	1
15	810100-6	CAUTION LABEL	1
16	345579-7	SPRING GUIDE	1
17	233431-0	COMPRESSION SPRING 48	1
18	345579-7	SPRING GUIDE	1
19	310161-1	TOOL RETAINER	1
20	310161-1	TOOL RETAINER	1
21	165407-8	LOCK SLEEVE	1
021-1	165446-8	LOCK SLEEVE	1
22	324542-3	TOOL HOLDER	1
23	922128-3	HEX. SOCKET HEAD BOLT M4X16	1
023-1	266437-3	HEX. SOCKET HEAD BOLT M4X16	1
24	213317-4	O RING 20	1
25	213392-0	FLUORIDE RING 25	1
26	213281-9	X-RING 18	1
27	324569-3	IMPACT BOLT	1
28	421901-3	RUBBER RING 17	1
29	324573-2	RING 17	1
30	419003-7	SLIDE SLEEVE	1
31	324571-6	STRIKER	1
32	213962-5	O RING 22	1
33	331709-6	RING 33	1
34	233448-3	COMPRESSION SPRING 37	1
35	227486-5	STRAIGHT BEVEL GEAR 25	1
035-1	227509-9	STRAIGHT BEVEL GEAR 25	1
36	419005-3	CONNECTING ROD	1
37	213379-2	O RING 21	1
38	213962-5	O RING 22	1
39	419004-5	PISTON	1
40	256197-5	PIN 7	1
41	233937-8	RING SPRING 31	1
42	257268-1	RING 33	1
43	213406-5	O RING 30	1
44	213406-5	O RING 30	1
45	233935-2	RING SPRING 32	1
46	324570-8	CYLINDER 28.5	1
47	317923-8	PIPE HOLDER	2
48	213030-4	O RING 8	2
49	419011-8	SPRING GUIDE	2

Perfo-Burineur SDS-Max HR4010C



50	263005-3	RUBBER PIN 6	2
51	233435-2	COMPRESSION SPRING 11	2
52	213275-4	O RING 18	2
53	324572-4	PIPE 16	2
54	324574-0	COUNTER WEIGHT	2
054-1	324574-0	COUNTER WEIGHT	2
55	213275-4	O RING 18	2
56	233435-2	COMPRESSION SPRING 11	2
57	263005-3	RUBBER PIN 6	2
58	419011-8	SPRING GUIDE	2
59	213030-4	O RING 8	2
60	317923-8	PIPE HOLDER	2
61	213030-4	O RING 8	4
62	266041-8	TAPPING SCREW 5X25	4
63	233432-8	COMPRESSION SPRING 7	2
64	421910-2	SEAL PLATE	2
65	911133-5	PAN HEAD SCREW M4X18	6
66	266192-7	TAPPING SCREW 4X14	2
67	419009-5	LOCK BUTTON	1
68	233436-0	COMPRESSION SPRING 3	2
69	266192-7	TAPPING SCREW 4X14	1
70	419020-7	CHANGE LEVER	1
71	419007-9	CRANK LEVER	1
72	317925-4	CRANK CAP COVER	1
73	419030-4	CRANK CAP	1
74	421908-9	SEAL RING	1
75	419019-2	LINK PLATE GUIDE	1
76	345582-8	LINK PLATE	1
77	419012-6	AIR PIPE	1
78	421909-7	AIR PIPE SEAL	1
79	421909-7	AIR PIPE SEAL	1
80	154622-9	CRANKHOUSING COMPLETE	1
80	214656-5	PLANE BEARING 51	1
80	324568-5	RING 40	1
81	423345-3	CUSHION PLATE	1
82	419008-7	FIX GUIDE	2
83	213262-3	O RING 18	1
84	419006-1	LINK LEVER	1
85	911511-9	PAN HEAD SCREW M4X10	1
86	324550-4	CRANK SHAFT	1
87	211332-2	BALL BEARING 6004LLU	1
88	961060-6	RETAINING RING S-20	1
89	226605-0	HELICAL GEAR 38	1
90	253180-3	FLAT WASHER 10	1
91	421907-1	SEAL RING	1
92	154623-7	GEAR HOUSING COMPLETE	1
92	212075-9	NEEDLE ROLLER BEARING 1010	1
92	268136-3	PIN 4	2
93	233433-6	COMPRESSION SPRING 5	2
95	419018-4	CHANGE PLATE	1
96	210005-4	BALL BEARING 608DDW	1
97	345581-0	CUP WASHER 8	1
98	233936-0	CONICAL COMPRESSIONSPRING19-27	1
99	324549-9	DRIVING FLANGE	1
103	211323-3	BALL BEARING 6904LLU	1
104	135086-6	TORQUE LIMITER ASS'Y	1
104		INC. 96-103	0

Perfo-Burineur SDS-Max HR4010C



105	265995-6	TAPPING SCREW 4X18	1
106	419036-2	HANDLE COVER	1
108	650567-4	SWITCH TG73B-1	1
109	154626-1	SWITCH HOLDER COMPLETE	1
109	423344-5	SPONGE SEAT	1
112	419028-1	SWITCH LEVER	1
113	266041-8	TAPPING SCREW 5X25	4
116	861492-6	HR4010C NAME PLATE	1
117	419040-1	HANDLE	1
122	638407-6	LEAD UNIT	1
123	419010-0	LENS	1
124	266192-7	TAPPING SCREW 4X14	1
125	631657-2	CONTROLLER	1
126	419024-9	CORD CLAMP BASE	1
127	687169-3	STRAIN RELIEF	1
128	266192-7	TAPPING SCREW 4X14	1
129	266192-7	TAPPING SCREW 4X14	1
130	265995-6	TAPPING SCREW 4X18	4
131	682560-0	CORD GUARD 10	1
132	695123-3	POWER SUPPLY CORD 1.5-2-4.0	1
132-1	665638-4	POWER SUPPLY CORD 1.5-2-4.0	1
133	265995-6	TAPPING SCREW 4X18	2
134	419032-0	REAR COVER	1
135	931303-0	HEX. NUT M6	1
136	253047-5	FLAT WASHER 6	1
137	241876-8	FAN 76	1
138	419022-3	FAN GUIDE	1
139	194160-9	CARBON BRUSH CB-350	1
140	638393-1	BRUSH HOLDER UNIT	1
140	643816-6	BRUSH HOLDER	2
140	266007-8	TAPPING SCREW BIND PT 3X10	4
141	154619-8	MOTOR HOUSING COMPLETE	1
141	345650-7	WASHER PLATE	1
142	324390-0	SHOULDER SLEEVE 6	1
143	210005-4	BALL BEARING 608DDW	1
144	681650-6	INSULATION WASHER	1
145	625738-2	FIELD 220-240V	1
146	266095-5	TAPPING SCREW 5X55	2
147	513633-7	ARMATURE ASS'Y 220-240V	1
147		INC. 143144	0
148	419021-5	BAFFLE PLATE	1
149	253084-9	FLAT WASHER 12	1
150	211137-0	BALL BEARING 6201LLU	1
151	213231-4	OIL SEAL 15	1
152	331596-3	SLEEVE 12	1
153	419033-8	CRANK HOUSING COVER	1
154	266192-7	TAPPING SCREW 4X14	1
155	419026-5	SWITCH BOX	1
156	263027-3	RUBBER PIN 4	1
157	651418-4	SWITCH ST115A-40	1
158	232209-8	LEAF SPRING	1
159	154635-0	SLIDE LEVER COMPLETE	1
159	257754-2	SLEEVE 4	1
159	268138-9	FLAT FILLISTER HD.PIN 4	1
160	419027-3	CONTROL PLATE	1
161	421939-8	SPONGE SHEET	1
162	819361-5	CLEAR LABEL	1

Perfo-Burineur SDS-Max HR4010C



A01	134890-0	SIDE HANDLE 68 ASS'Y	1
A01	151769-0	SIDE HANDLE 68 COMPLETE	1
A01	252640-2	WING NUT M8	1
A01	265439-6	HEX. BOLT M8X150	1
A01	417002-3	SIDE HANDLE CAM	2
A01	417003-1	SIDE HANDLE	1
A02	134803-1	GRIP 36 ASS'Y	1
A02	152554-4	GRIP 36 COMPLETE	1
A02	265701-9	SCREW M6X14	1
A02	266163-4	CUP SQUARE NECK BOLT M8X80	1
A02	321248-4	DEPTH GAUGE	1
A02	344491-8	GRIP SPRING 68	1
A02	344492-6	PLATE	1
A02	416299-1	SIDE GRIP BASE 68	1
A02	931302-2	HEX. NUT M6	1
A02-1	135209-6	GRIP 36 ASS'Y	1
A02-1	158131-0	GRIP 36 COMPLETE	1
A02-1	265701-9	SCREW M6X14	1
A02-1	266163-4	CUP SQUARE NECK BOLT M8X80	1
A02-1	321248-4	DEPTH GAUGE	1
A02-1	344491-8	GRIP SPRING 68	1
A02-1	344492-6	PLATE	1
A02-1	416299-1	SIDE GRIP BASE 68	1
A02-1	931302-2	HEX. NUT M6	1
A03	154677-4	PLASTIC CARRYING CASE COMPLETE	1
A03	416401-6	LATCH	2
A03	163467-4	LATCH	2
A03	816841-2	INDICATION LABEL	1
A03-1	158691-2	PLASTIC CARRYING CASE COMPLETE	1
A03-1	816841-2	INDICATION LABEL	1
A04	181573-3	GREASE VESSEL 93G	1
A04	817105-7	CAUTION LABEL	1
A04-1	194683-7	GREASE VESSEL SET	1
A04-1	817105-7	CAUTION LABEL	1
A05	443122-7	CLOTH	1