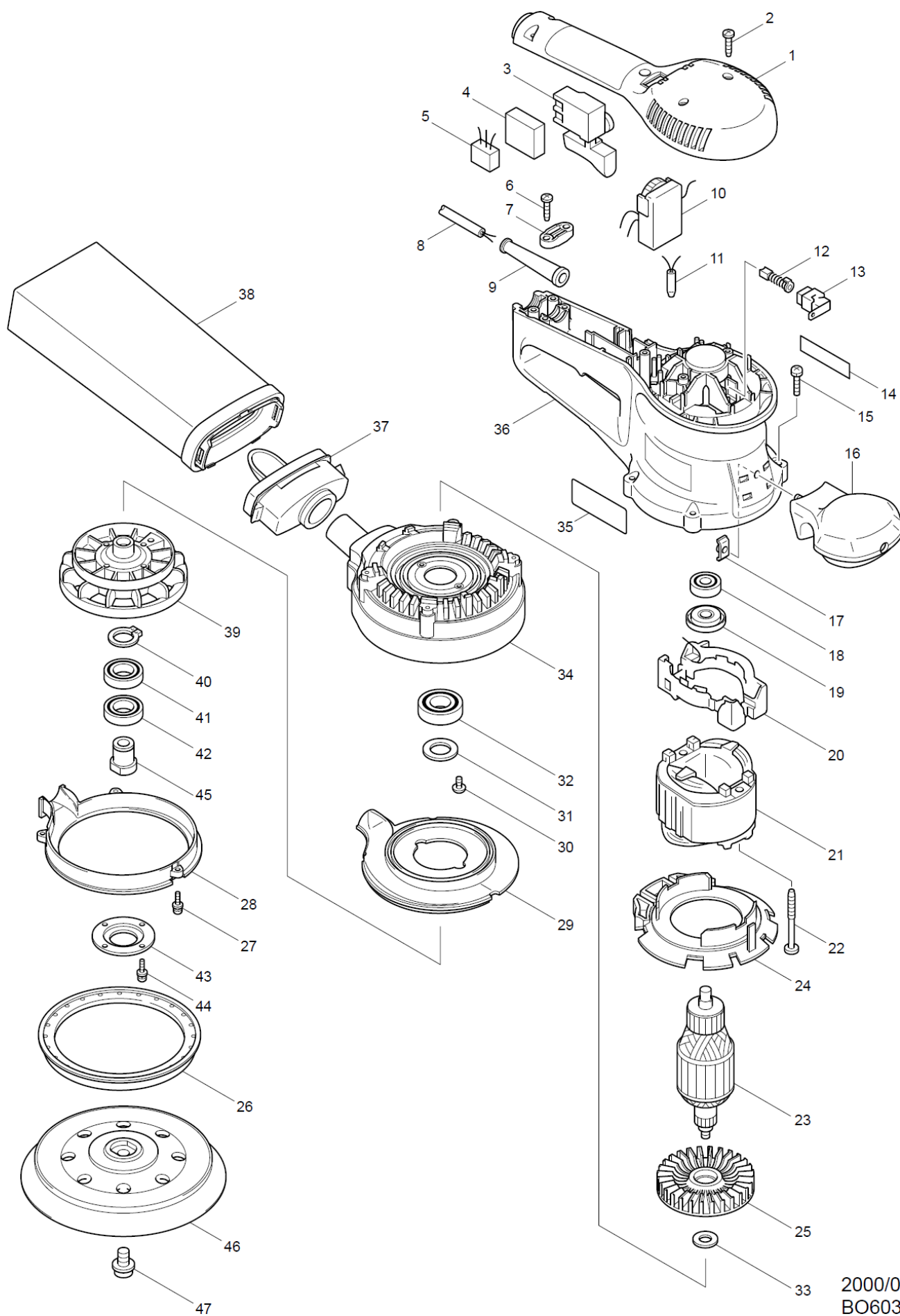


Ponceuse Excentrique BO6030



2000/08
BO6030

Ponceuse Excentrique **BO6030**



Item	Parts_No.	Parts_Description	Qty
1	417416-6	TOP COVER	1
2	265995-6	TAPPING SCREW 4X18	5
3	651286-5	SWITCH SGEL206C-5	1
4	685700-9	SPONGE SHEET	1
5	645253-0	NOISE SUPPRESSOR	1
6	265995-6	TAPPING SCREW 4X18	2
007A	687063-9	STRAIN RELIEF	1
007A1	687052-4	STRAIN RELIEF	1
008G	666855-9	POWER SUPPLY CORD 1.0-2-4.0	1
008G1	695034-2	POWER SUPPLY CORD 1.0-2-4.0	1
9	682559-5	CORD GUARD 8	1
10	631424-5	CONTROLLER	1
11	646056-5	CHOKE COIL	1
012A	191962-4	CARBON BRUSH CB-419	1
13	643923-5	BRUSH HOLDER	2
14	819063-3	MAKITA LABEL	1
15	911138-5	PAN HEAD SCREW M4X20	4
16	168324-1	FRONT GRIP	1
17	252042-2	SQUARE NUT M5	1
18	210005-4	BALL BEARING 608DDW	1
19	681644-1	INSULATION WASHER	1
20	638067-4	SUPPORT COMPLETE	1
21	634408-2	FIELD 220-240V	1
22	266046-8	TAPPING SCREW 5X50	2
23	516453-8	ARMATURE ASS'Y 220-240V	1
23		INC. 181925	0
24	417415-8	BAFFLE PLATE	1
25	240043-2	FAN 70	1
26	421763-9	RUBBER GUARD	1
27	911018-5	PAN HEAD SCREW M3X12	3
28	183323-2	SCROLL HOUSING SET	1
28		INC. 29	0
29	183323-2	SCROLL HOUSING SET	1
29		INC. 28	0
30	251291-8	+ SCREW M4X8	2
31	253315-6	THIN WASHER 15	1
32	211227-9	BALL BEARING 6002DDW	1
032-1	211236-8	BALL BEARING 6002DDW	1
33	253878-2	FLAT WASHER 10	1
34	317416-5	SKIRT	1
35	852996-9	NAME PLATE BO6030	1
36	183322-4	MOTOR HOUSING SET	1
36		INC. 14	0
37	151518-5	DUST NOZZLE COMPLETE	1
38	151517-7	DUST BAG COMPLETE	1
39	241665-1	FAN 92	1
40	961055-9	RETAINING RING S-15	1
41	211239-2	BALL BEARING 6902DDW	1
041-1	211234-2	BALLBEARING 6902LLB	1
42	211239-2	BALL BEARING 6902DDW	1
042-1	211244-9	BALL BEARING 6902LLU	1
43	285702-1	BEARING RETAINER	1
44	911018-5	PAN HEAD SCREW M3X12	4
45	324144-5	SPINDLE	1
46	743063-0	PAD 150	1
046-1	193299-5	PAD 150 (SOFT)	1

Ponceuse Excentrique **BO6030**



046-2	A-87812	RUBBER PAD (SOFT)	1
47	266270-3	HEX.SOCKET HEAD BOLT M8X14	1
A01	410047-0	WRENCH HOLDER 5.6	1
A02	794610-0	ABRASIVE DISC 150#120	1
A03-1	783203-8	HEX. WRENCH 5	1
A04	193294-5	PAPER DUST BAG HOLDER	1
A05	193293-7	PAPER DUST BAG	1
E01	654128-2	EARTH TERMINAL	1